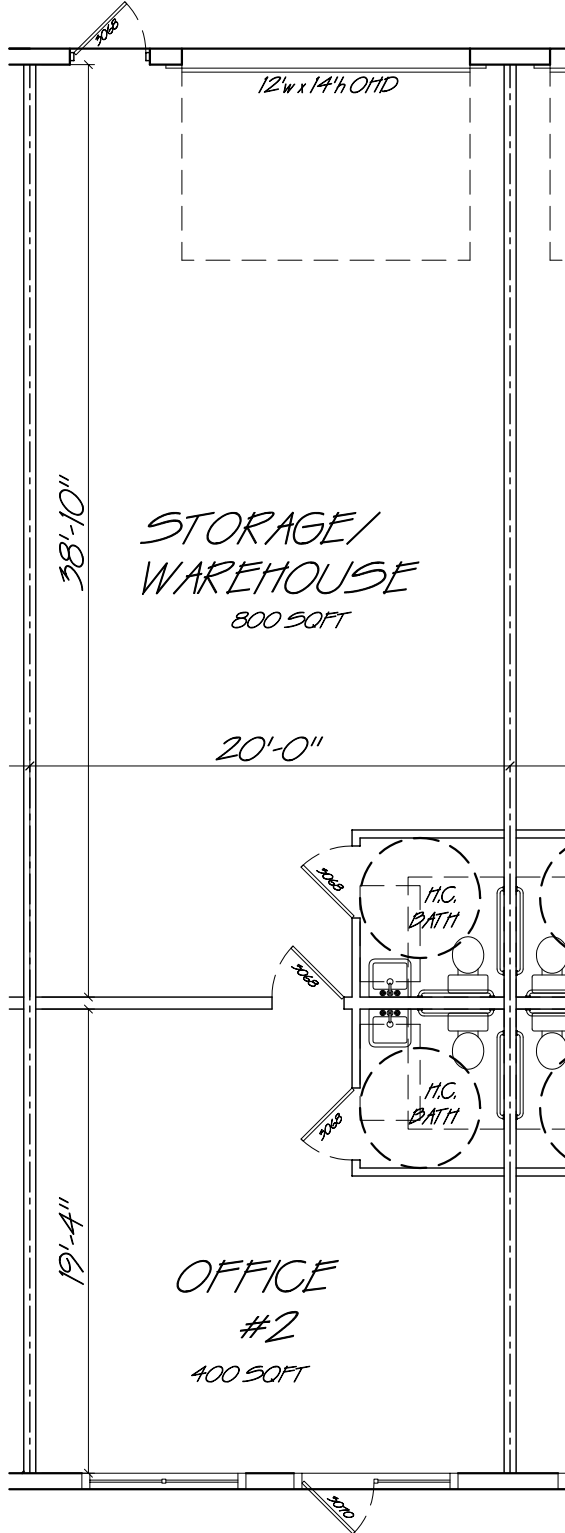


EXHIBIT "A"



UNIT SPECS

400sqft OFFICE
 800sqft STORAGE/WAREHOUSE
 ALUMINUM IMPACT STOREFRONT GLASS
 12'x14' EXTERIOR ROLL UP DOOR
 AWNINGS PER ELEVATIONS
 CONCRETE BLOCK - EXTERIOR WALLS
 METAL STUD - INTERIOR WALLS
 2 REST ROOMS- ADA COMPLIANT
 2 REST ROOMS - MIRRORS, GRAB BARS
 FIRE EXTINGUISHERS
 ALFOIL INSULATION - EXTERIOR WALLS
 3" BATT INSULATION - INTERIOR WALLS
 3" CEILING INSULATION
 DRYWALL TAPED AND FINISHED
 DRYWALL TEXTURE - OFFICES ONLY
 2x2 ACOUSTICAL CEILING - OFFICES ONLY
 3' SOLID DOOR - OFFICES ONLY
 3' MASONITE DOOR ALL REST ROOMS
 125 AMP ELECTRICAL PANEL
 6 - DUPLEX RECEPTACLES - OFFICE ONLY
 4 - 2x4 FL. LAY IN LIGHTS - OFFICE ONLY
 2- LOW BAY LIGHTS - WAREHOUSE
 2 - DUPLEX RECEPTACLES - WAREHOUSE
 2 - TELEPHONE / DATA CONDUITS - OFFICE
 EXIT LIGHTS
 EMERGENCY LIGHTS
 REST ROOMS EXHAUST TO EXTERIOR
 1.5 TON A/C UNIT - OFFICES ONLY
 ALL INTERIOR WALLS PRIMER PAINTED