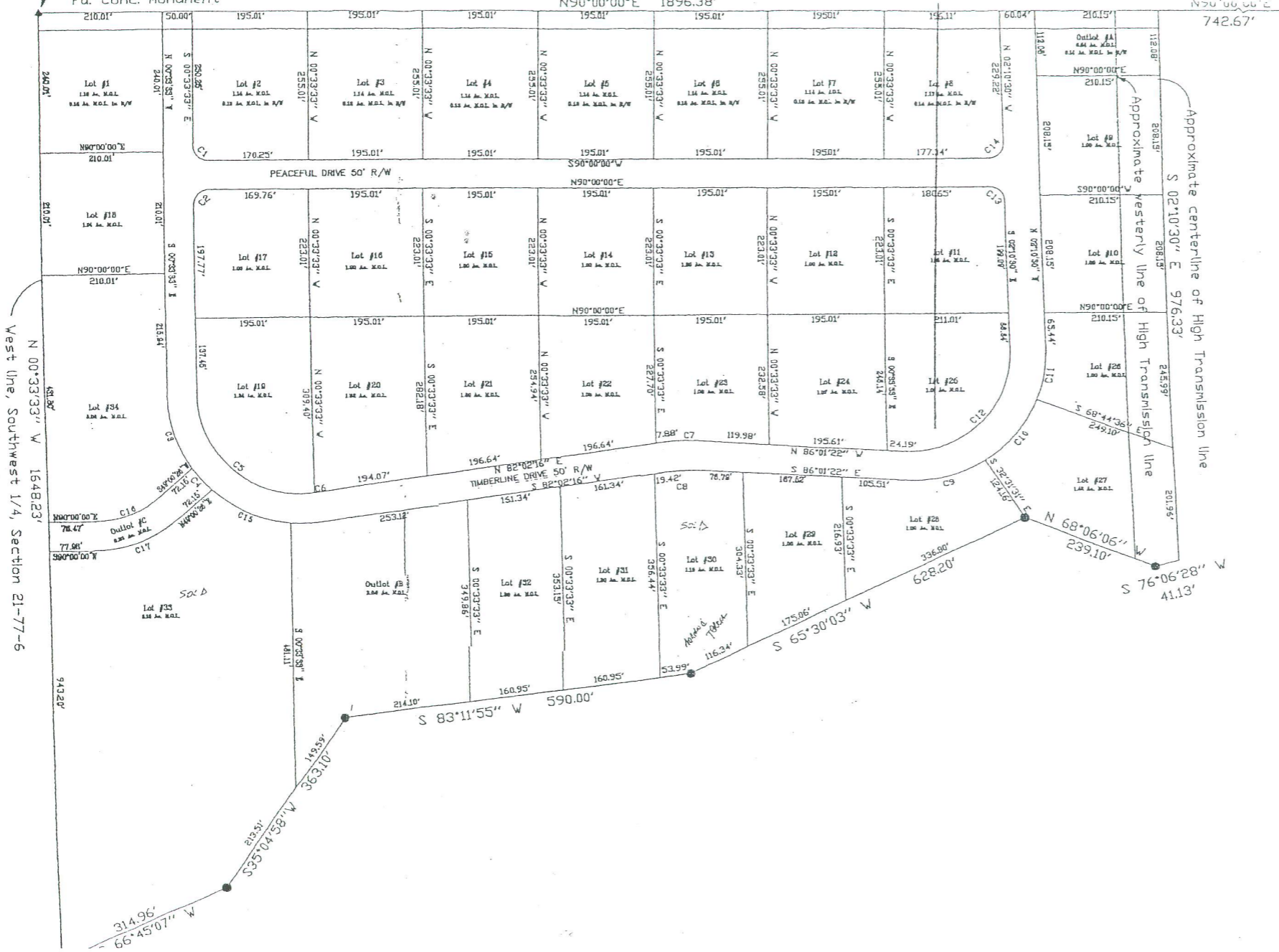


West 1/4 corner
Section 21-77-6
Fd. Conc. Monument

North line, Southwest 1/4, Section 21-77-6
N90°00'00"E 1896.38'

N50°06'00"E
742.67'



West line, Southwest 1/4, Section 21-77-6
N 00°33'33" W 1648.23'

Approximate centerline of High Transmission line
S 02°10'30" E 976.33'

314.96'
66°45'07" W

S 83°11'55" W 590.00'

S 65°30'03" W 175.06'

N 68°06'06" W 239.10'

S 76°06'28" W 41.13'