

Governance Reorganization

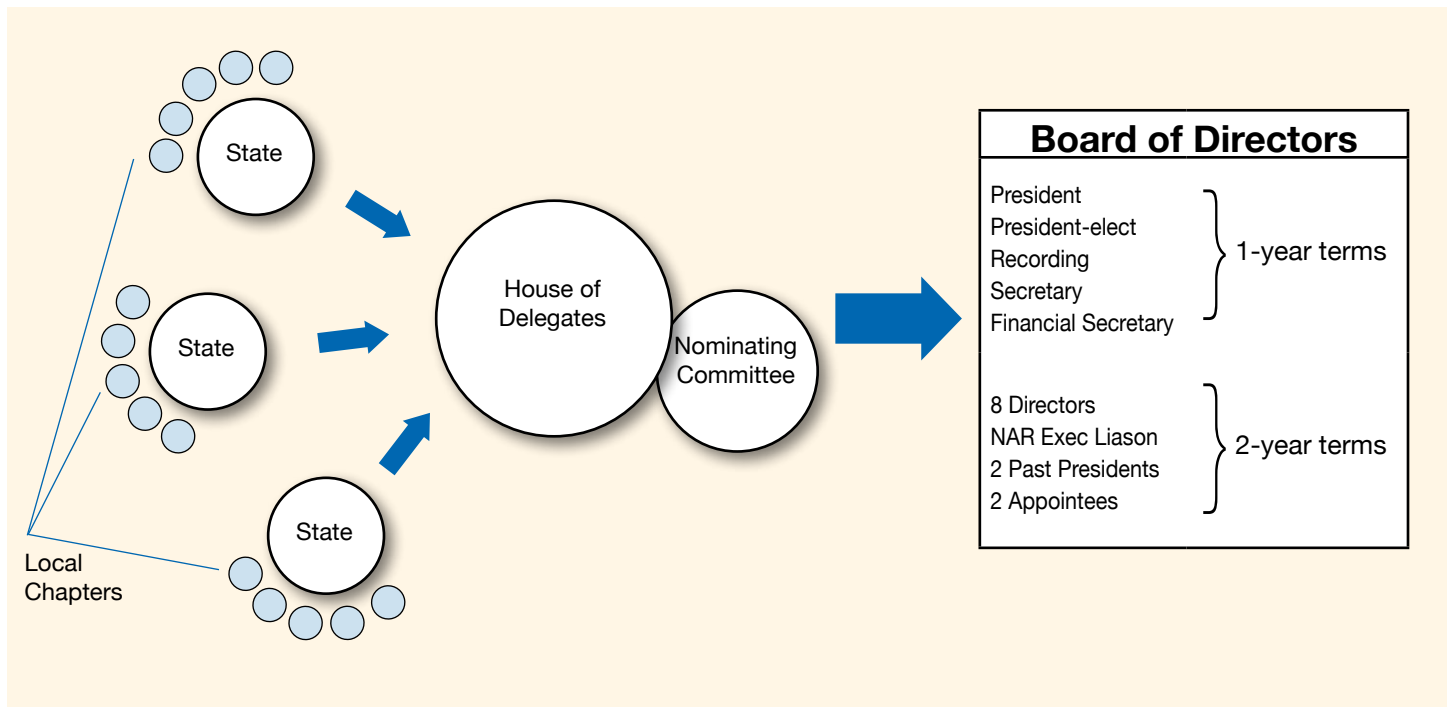
At a Glance



The best way to predict the future is to invent it.

-Alan Kay

New Structure at a Glance



If we don't change, we don't grow. If we don't grow, we aren't really living.

-Gail Sheehy

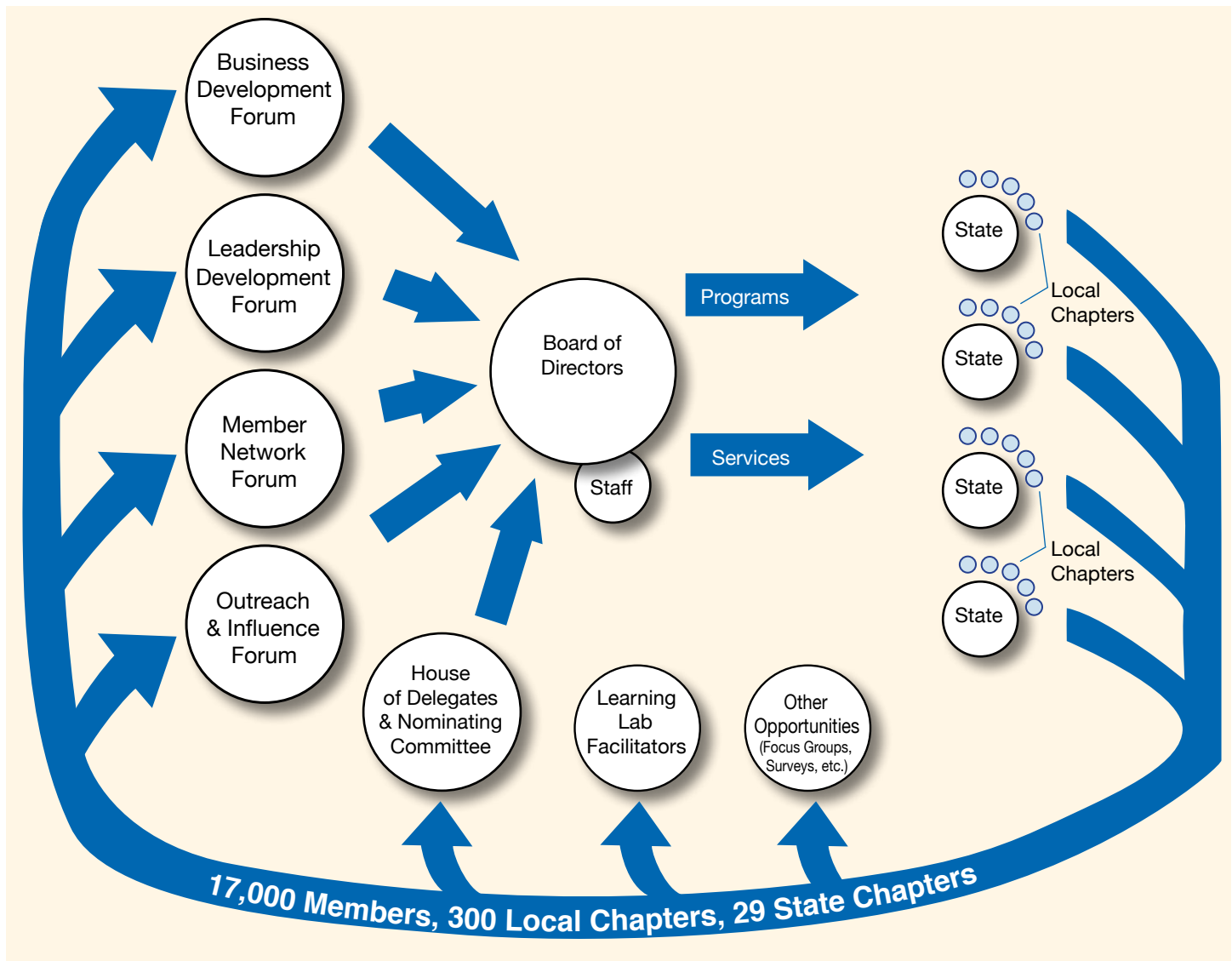
We are confronted with insurmountable opportunities.

-Pogo

- **Local and State Chapters**
 - Elect representatives to the House of Delegates
- **House of Delegates**
 - Elects most board members annually
 - Elects most members of the Nominating Committee
 - Approves amendments to the bylaws (changes to mission, dues and governance)
- **Nominating Committee**
 - Slates the four national line officers for election by the House of Delegates
- **Board of Directors**
 - 40% annual rotation rate as members begin/end their terms
 - Plans for the future
 - Makes, monitors and adjusts policy
 - Develops annual operating goals based on the Strategic Plan
 - Oversees finances and the budget
 - Submits any bylaws amendments to the House of Delegates for approval



How Do I Participate and What Effect Will I Have?



- **Strategic Forums**
 - Steering Committees of seven members each (28 total) are appointed based primarily on the National Focus recommendations from the states, and they plan the work of each forum based on Strat Plan
 - Any member may participate in any forum
 - Members give of their expertise to help develop new programs and services (about 500 members participate at each national meeting)
 - Outside experts inform and educate about areas of value to members
- **Board of Directors is comprised of 17 members who rotate through on staggered terms**
- **Nominating Committee is comprised of 11 members**
- **National Focus**
 - States recommend members for appointment to forums and committees, focus groups, learning labs and other leadership opportunities

*And the day came
when the risk it took
to remain tight inside
the bud was more
painful than the risk
it took to blossom.*

-Anais Nin

Special Committee on Governance

In May 2007, the Governing Board referred the first governance reorganization proposal back to a Special Committee on Governance comprised of the Executive Committee plus nine additional members. Of the 25 members of the group, eight (28 percent) are past presidents.

Name	City	Leadership Experience Highlights
Anita T. Davis, CRS, GRI, PMN	Baltimore, MD	RVP, SCP, LCP, Executive Committee, Academy Faculty
Ann DeFries, CRS, PMN	Ft. Lauderdale, FL	Current National President, SCP, GOV, LCP, Executive Committee, Academy Faculty
Julie DeLorenzo, ABR, CRS, PMN	Boise, ID	RVP, SCP, GOV, LCP, Executive Committee, Forum Chair
Deborah Gilmore, ABR, GRI, PMN, SRES	Marietta, GA	Current Line Officer, RVP, SCP, GOV, LCP, Executive Committee, Academy Faculty
Becky Hill, ABR, PMN	Houston, TX	Current Line Officer, RVP, SCP, GOV, LCP, Executive Committee, Academy Faculty
Elizabeth Mendenhall, ABR, ABRM, CIPS, CRB, GRI, PMN	Columbia, MO	SCP, LCP, Executive Committee, Academy Faculty
Bob Nachman, ABR, CRS, GRI, PMN, SRES	Scottsdale, AZ	RVP, SCP, GOV, LCP, Executive Committee
Bobbie Nelson, CRS, GRI, PMN, SRES	Aptos, CA	SCP, GOV, LCP, Executive Committee, Academy Faculty
Caroline Nordyke, ABR, CRS, GRI, PMN	Bennett, CO	RVP, SCP, GOV, LCP, Executive Committee
Beth Pressler, CRS, GRI, PMN	Grosse Pointe Farms, MI	RVP, GOV, LCP, Executive Committee, Academy Faculty
Mary Raysa, CRB, CRS, GRI, PMN	Columbus, OH	GOV, LCP, Executive Committee, Academy Faculty
Bradford Riedle, ABR, CRS, GRI	Rehoboth Beach, DE	RVP, SCP, LCP, Executive Committee
Margret Roberts, ABR, CRS, PMN	Rochester, NY	RVP, SCP, GOV, LCP, Academy Faculty, Forum Vice-chair
Cynthia Shafer, PMN	Ft. Myers Beach, FL	RVP, SCP, GOV, LCP, Executive Committee, Forum Chair, Academy Faculty
Jo Ann Stevens, PMN	Missouri City, TX	RVP, SCP, LCP, Forum Chair
Kenneth Sundberg, ABR, CRB, CRS, PMN	Acton, MA	RVP, SCP, LCP, Executive Committee
Margo Willis, GRI, PMN, SRES	Spanaway, WA	Current Line Officer, RVP, SCP, GOV, LCP, Executive Committee

Past National Presidents

2007	Judy Moses, ABR, CRS, GRI, PMN, SRES	Boston, MA
2006	Gail Hartnett, ABR, CRS, PMN	Boise, ID
2005	Betty Kincaid, PMN	Las Vegas, NV
2004	Brenda Ghibaudi, CRS, PMN	Ft. Lauderdale, FL
2000	Brenda Ballard, ABR, CIPS, CRB, PMN	Emerald Isle, NC
1999	Deborah Battersby, CRS, GRI, PMN, SRES	Bartlett, IL
1998	Doris Edwards, CRB, CRS, GRI, PMN	Sarasota, FL
1984	Pat Parks, CRB, CRS, PMN	Louisville, KY

