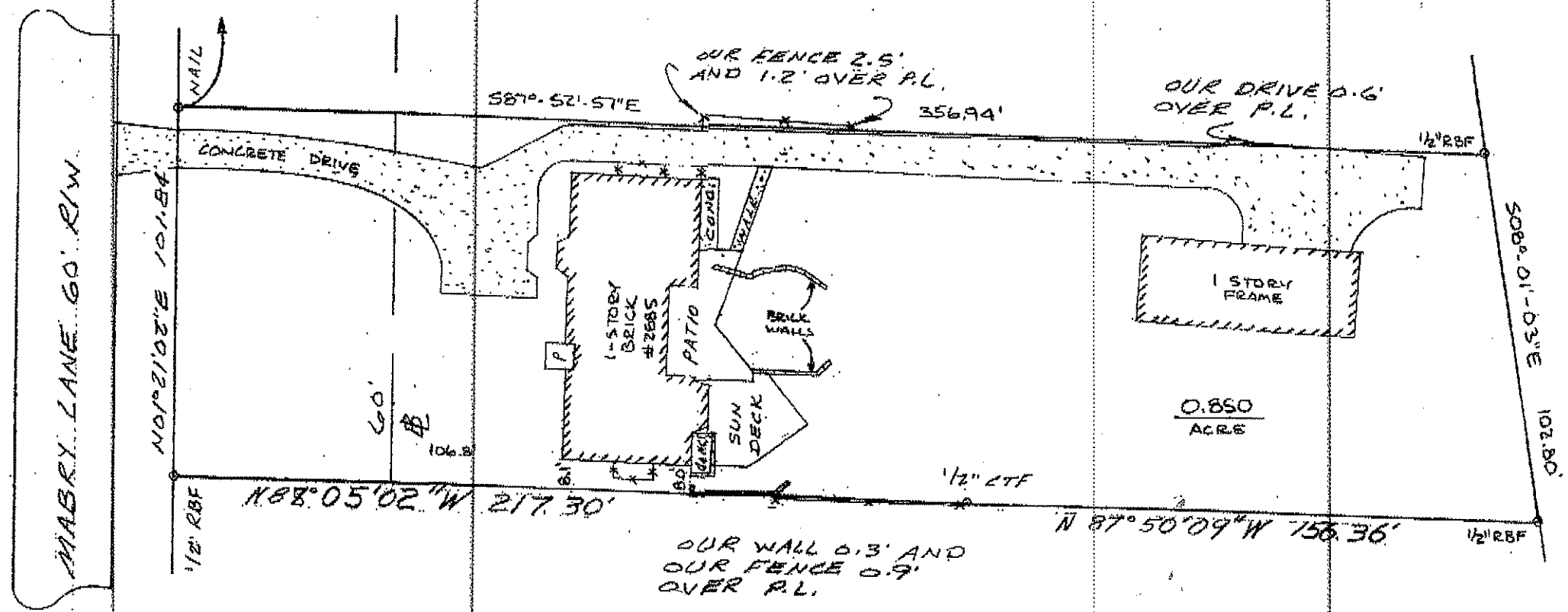


MAG. NORTH

This fax was received by GFI FAXmaker fax server. For more information visit: http://www.gfi.com

859.30' TO MABRY ROAD R/W



THIS MAP OR PLAT HAS BEEN CALCULATED FOR CLOSURE AND IS FOUND TO BE ACCURATE WITHIN ONE FOOT IN 118,546 FEET.

REFERENCE: P.B. 28, Pg. 106
EQUIPMENT USED: TOPCON TOTAL STATION

THIS PLAT WAS PREPARED TO SHOW THE APPROXIMATE LOCATION OF THE IMPROVEMENTS AND IS NOT RECORDABLE. FENCES SHOULD NOT BE PLACED USING SIDE DIMENSIONS FROM HOUSE. ALL MATTERS OF TITLE ARE EXCEPTED. THIS PLAT IS SUBJECT TO ALL LEGAL EASEMENTS AND RIGHTS-OF-WAYS, PUBLIC OR PRIVATE.

IN MY OPINION, THIS PLAT IS A CORRECT REPRESENTATION OF THE LAND PLATTED.

LOT 9
BLOCK B
MABRY WOODS

I have, this date, examined the "FIA (OFFICIAL FLOOD HAZARD MAP)" and the referenced parcel / does not appear to be in an area having special flood hazards.

THE FLOOD INFORMATION ON THIS PLAT HAS BEEN DETERMINED AFTER REVIEW OF MAPS WHICH ONLY APPROXIMATE THE LOCATION OF THE APPLICABLE FLOOD HAZARD AREA. A SECOND OPINION OR COMPREHENSIVE FLOOD EVALUATION STUDY IS SUGGESTED FOR MORE ACCURATE INFORMATION. FOR FURTHER INFORMATION CONTACT THE LOCAL DRAINAGE DEPARTMENT, CORPS OF ENGINEERS, AND INSURANCE COMPANY OR AN APPRAISER

EDMUND JOSEPH WALL		
DATE: 10-3-2006	SCALE: 1"=40'	
DRAWN BY: KE	GRAPHIC SCALE IN FEET	
LAND LOT 274	15 th DISTRICT	SECTION
DEKALB	COUNTY	GEORGIA
GA. LAND SURVEYING CO., INC. 156 CLIFTWOOD DRIVE ATLANTA, GA 30328 (404) 255-4871		DRAWING NUMBER F29-4
185909		