

Understanding the Assessor's Parcel Numbering System!

PARCEL NUMBERING SYSTEM

Most counties use a numbering system to identify a parcel for tax purposes. In California, the Assessor's Parcel Number (APN) refers to the map book and acts as the index for researching parcel information. Information is available for public viewing in most county Assessor's Offices and Recorder's Offices.

THE PARCEL NUMBER USUALLY CONSISTS OF THREE PARTS.

For example, APN: 123-456-78 would mean Assessor's Book 123; Page 45 and Block 6 of that page; and parcel 78 of that Block.

APN: 123-456-78

Book Page Block Parcel

LOCATING PARCELS

1. If street names are shown on the Plat Map, use the street index guide of another larger area map to locate the parcel.
2. If no street names are present, use the Township and Range numbers to locate the parcel.

The entire United States is divided into a large grid pattern of Townships and Ranges approximately six miles wide. Each Township and Range intersection is comprised of 36 Sections of land. A single Section is one square mile in size. Refer to the legend of another general area map to identify its Section, Township and Range markings.

For example: S. 1/2, Sec. 16, T.6N, R.3W across the top of a Plat Map would mean the South Half of Section 16, Township 6 North, Range 3 West. Refer to the legend of another general area map to identify corresponding Section, Township and Range markings.

HELPFUL INFORMATION

The Assessor's Office and the Planning Departments in most counties maintain a variety of maps (General, Assessor's Plat, Subdivision and Zoning maps). These offices are a good source of property information. Title companies are another good source of information (fees are sometimes required).

The United States department of the interior, Geological Survey (U.S.G.S.), maps cover the entire country and come in several different scales. Many retailers sell U.S.G.S. maps as well as county maps useful to the real estate investor. See your local book store, map dealer or camping outlet.

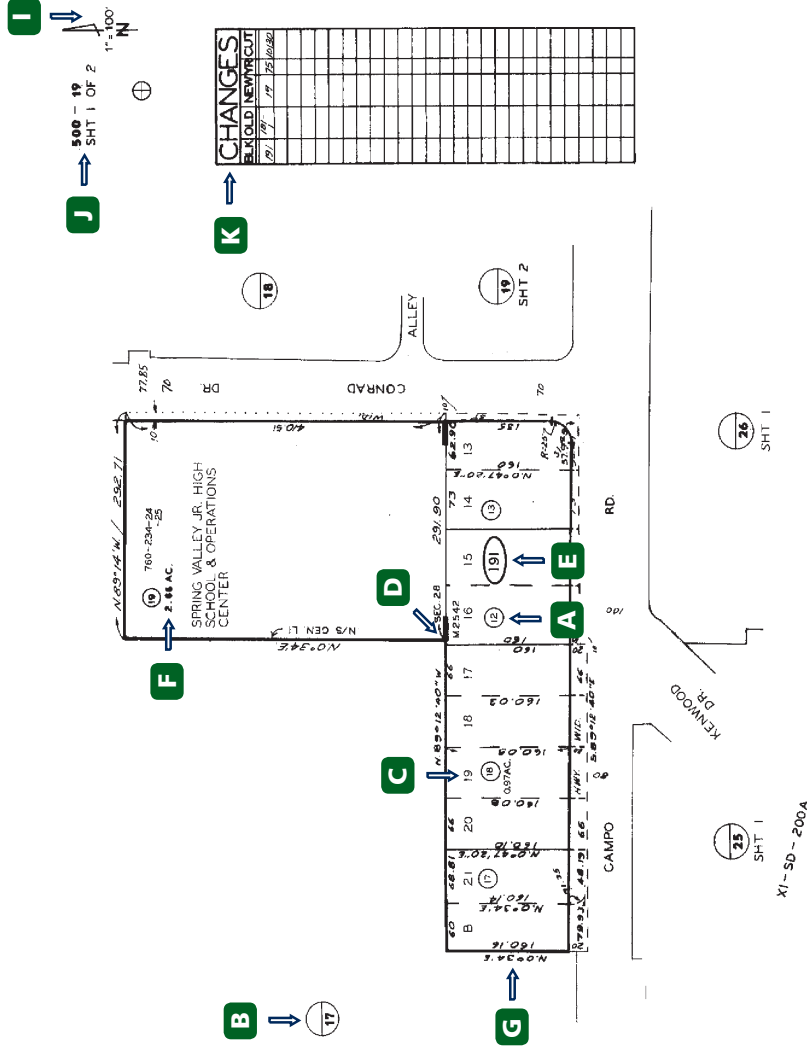


Specify
Dennis Wilson Team
for **TITLE** each time you *Open Escrow!*
714.392.5649
888.579.8454
www.Title4U.com



GUIDE TO READING AN ASSESSOR'S PLAT MAP

- A Parcel Number**
Always in a small circle. (occasionally an oval).
Attached housing will have 2 additional numbers (unit #) at the end of the parcel number.
- B Book & Page Circle**
Indicates what map page (# below the line) adjoins our map and in some cases which Assessor's Book (# above the line).
- C Lot Number**
Never Circled; shows the subdivision lot number of the property.
- D "Picture Corner"**
Shows the exterior corners of subdivision map boundaries as shown on the plat.
- E Page Number**
Of the Assessor's Book, Page & Picture Corner 1#. This is the full, 3 digit number (coinciding with column one in the changes box); always in an oval.
- F Acreage Figures**
A decimal number with AC following. Not always accurate. Use only for estimate.
- G Distances & Bearings**
Data on borders of the map. This data is from recorded deeds or surveys.
- H Lower Right**
Brief legal description of properties included on this page.
- I North Arrow**
Will not always be pointing "up".
SCALE: Is useful if map has been printed to proper size.
- J Assessor's Book Number**
Followed by first two digits of the Page Number, located in the upper right corner next to arrow.
- K Changes Box**
Provides the history of the map page.



- CUT**
Refers to the Assessor's file for document number, re: the change
- BLK**
Full, three-digit page number area of map.
- OLD**
The old (now changed) parcel number.
- NEW**
The new (changed) parcel number.

