

FIELDSTONE SOMERTON AT RIVER RANCH FEATURES

Exterior Architectural Amenities

Choice of exterior colors
Fire-resistant concrete tile roofing
Attached 2-car garage
Metal roll-up garage door and opener
Smooth Star six panel fiberglass entry door
Antique brass entry door hardware
Covered entry (all plans)
Extended porch with elevations B and C

Spacious Gourmet Kitchens

Hand set ceramic tile countertops
Oak finish kitchen cabinets with roller guides
Walk-in pantries
Whirlpool multi-cycle dishwasher
Refrigerator area plumbed for icemaker
Recessed ceiling lighting
Whirlpool gas-sealed burner range with self-cleaning oven

Luxury Master Bathrooms

Cultured marble countertop
Elegant Moen chrome faucets
Compartmentalized water closets
Decorator bar lighting
Dual sinks

Energy/Environmentally Efficient Features

Dual-glazed windows
Forced-air heating with programmable night set-back thermostat
50 Gallon energy-efficient water heater with glass lining
R-19 insulation in living space ceilings
R-11 insulation with Foamcore exterior sheathing
Weatherproofing of all exterior openings
Copper water system throughout

Elegant Interior Design

Cultured marble countertops in baths
Sizable secondary bedrooms
Double sink in secondary bath

Additional Included Features

Wood-burning fireplace with mantel in family room
Silent floor truss joist system with lifetime manufacturer's warranty
Custom ceramic tile entry
Designer-selected wall-to-wall carpeting throughout living area
Easy-care, no-wax vinyl flooring in kitchen and bath
Front yard landscaping with automatic sprinklers
Complete rear and side yard fencing
Advanced warning smoke detectors in all bedrooms
Anti-scald tub & shower valves
Pre-plumbed for air conditioning
Cable TV in all bedrooms
Wired for phone in master bedroom and kitchen
Post-tension slab
Upper cabinets above washer/dryer space in laundry room

Community Amenities

Easy freeway access to Highways 76 and 5
Gated community
Pool and spa
One-half basketball court
Tot lot(s)/picnic area

HomeFitting® Options

Fieldstone's HomeFitting® program is a unique concept in homebuying, reflecting our goal to give buyers the power of choice in designing their homes. Providing the ultimate opportunity to create your dream home, you have many choices.*

Air Conditioning

Upgraded appliances by Whirlpool and KitchenAid

Optional kitchen island

Study option

Optional cabinets in kitchen and laundry room

Security system

Central vacuum system

Wide variety of decorator countertops

Upgraded master and secondary bath tub enclosures

Whirlpool refrigerator, washer and/or dryer

Gas stub for BBQ in rear yard

Master bedroom deck (Plans 2478 and 2650)

Fireplace in living room

Double bedroom (Plans 2254 and 2478)

Master suite (Plan 2478)

Extended porch with elevation A

*Availability of options is subject to construction cut-off dates. See your sales representative for details.

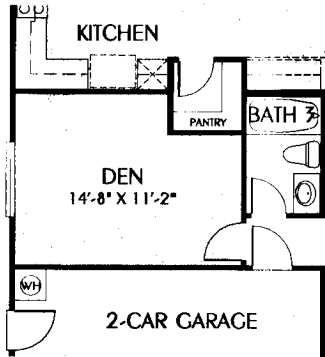
*Developer reserves the right to restrict lot selections to ensure architectural harmony.

**HomeFitting® options are available prior to construction cut-off dates. See your sales representative for details.

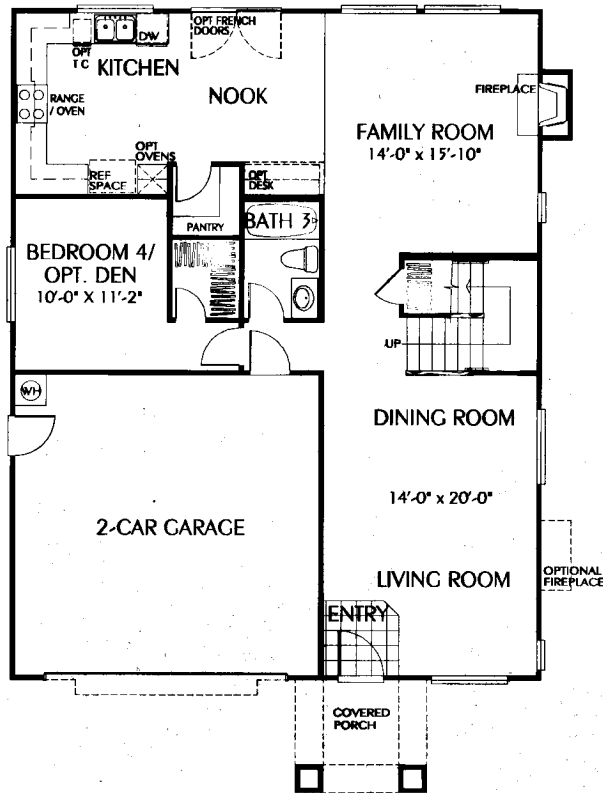
Please note: Many of the items featured in the model homes are decorator and landscaping suggestions and are not included in the purchase price. If you are in doubt, please ask your sales representative. Because of our continuing programs of research and development, or changes in material availability, we reserve the right to substitute product and design and alter prices or terms without notice or obligation.

PLAN 2650

DEN OPTION

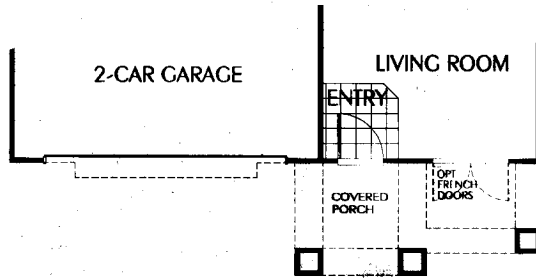


FIRST FLOOR

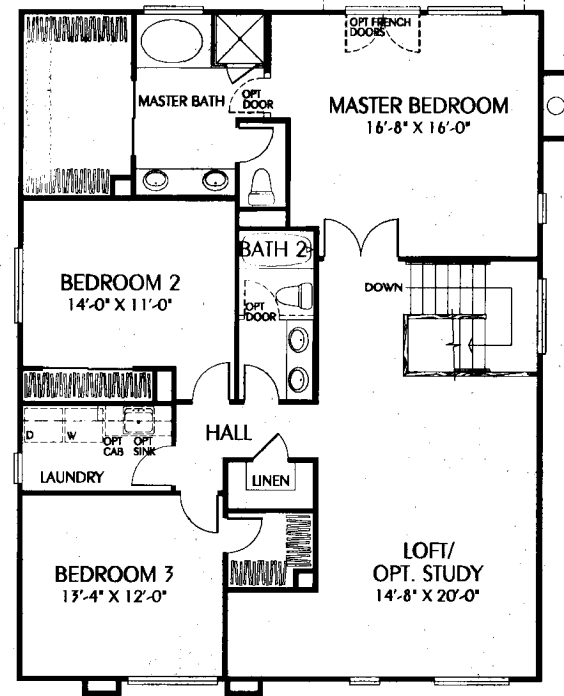


COVERED PORCH

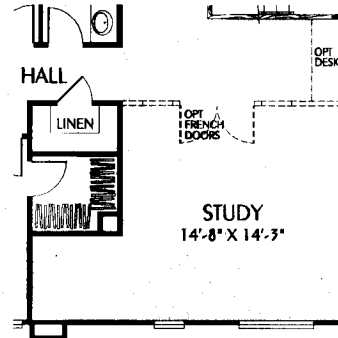
OPTIONAL AT ELEVATION "A"
STANDARD AT ELEVATIONS "B" AND "C"



SECOND FLOOR



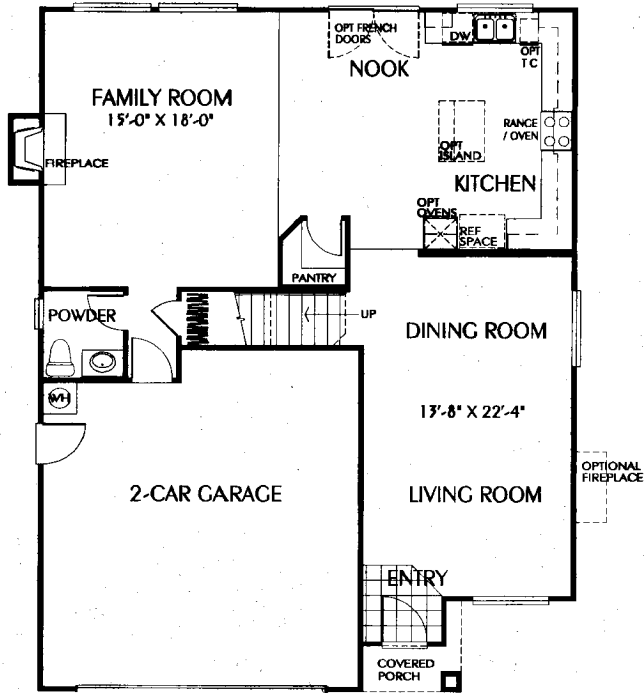
STUDY OPTION



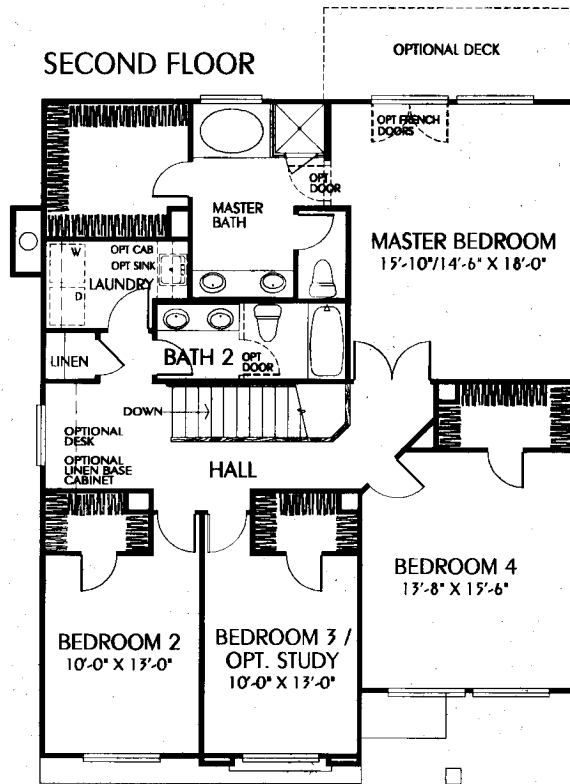
Fieldstone reserves the right to substitute product and design without notice or obligation. Square footage and room dimensions are approximate and may vary from actual plans. Window sizes and locations may vary with elevations and room options. Chase locations may vary.

PLAN 2478

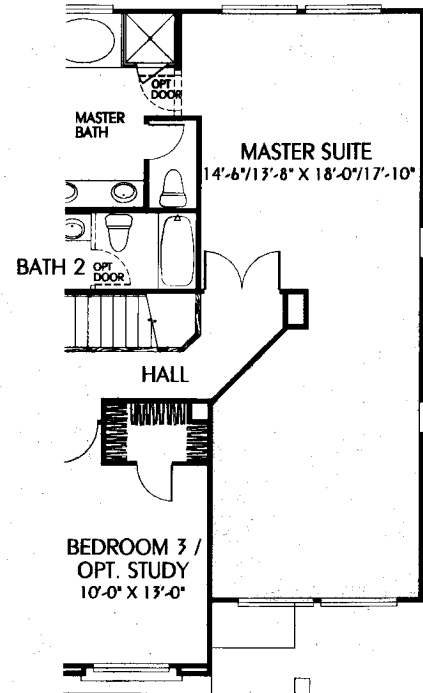
FIRST FLOOR



SECOND FLOOR

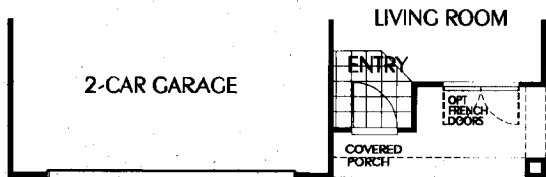


MASTER SUITE OPTION

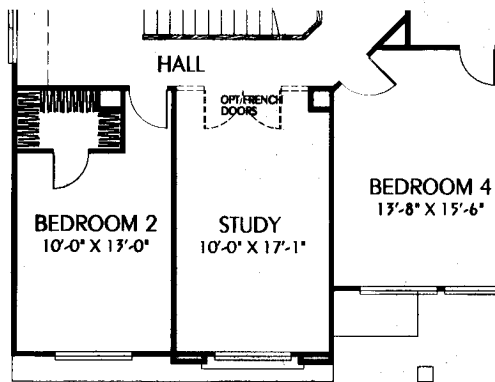


COVERED PORCH

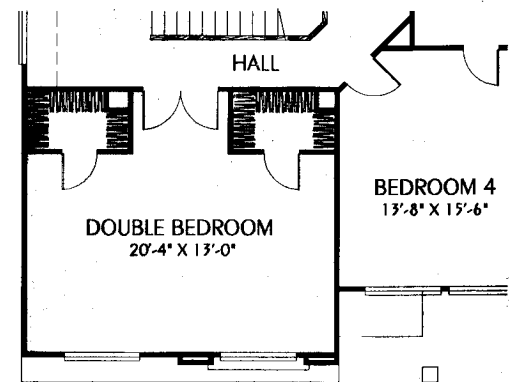
OPTIONAL AT ELEVATION "A"
STANDARD AT ELEVATIONS "B" AND "C"



STUDY OPTION



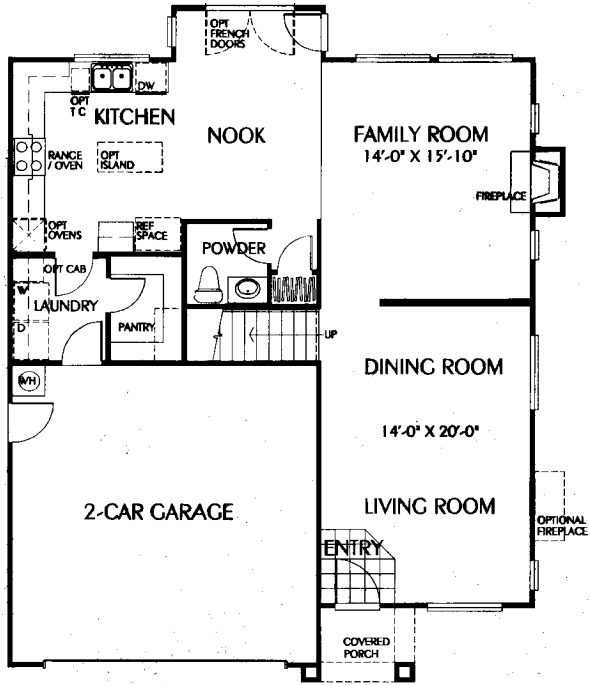
DOUBLE BEDROOM OPTION



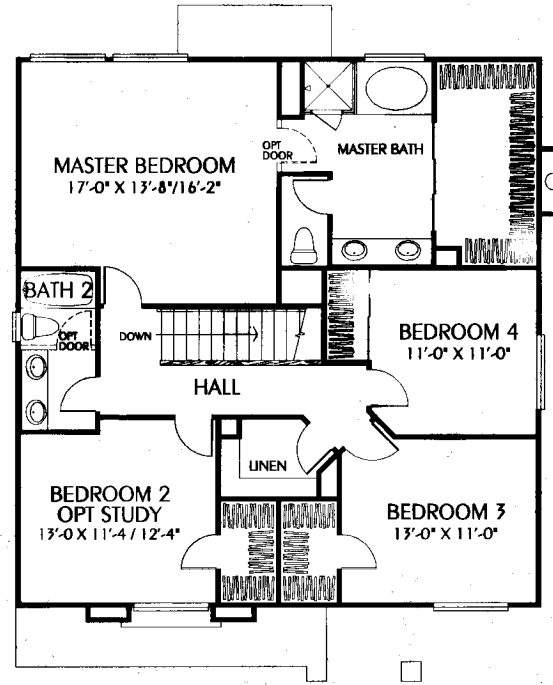
Fieldstone reserves the right to substitute product and design without notice or obligation. Square footage and room dimensions are approximate and may vary from actual plans. Window sizes and locations may vary with elevations and room options. Chase locations may vary.

PLAN 2254

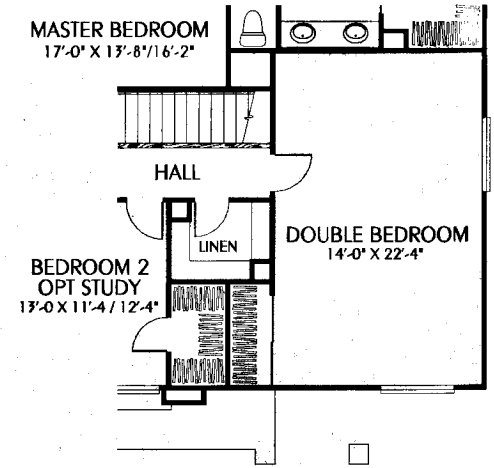
FIRST FLOOR



SECOND FLOOR

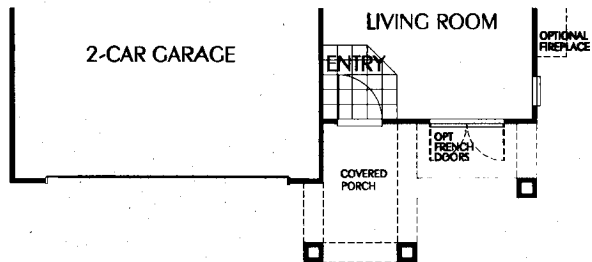


DOUBLE BEDROOM OPTION



COVERED PORCH

OPTIONAL AT ELEVATION "A"
STANDARD AT ELEVATIONS "B" AND "C"



STUDY OPTION

