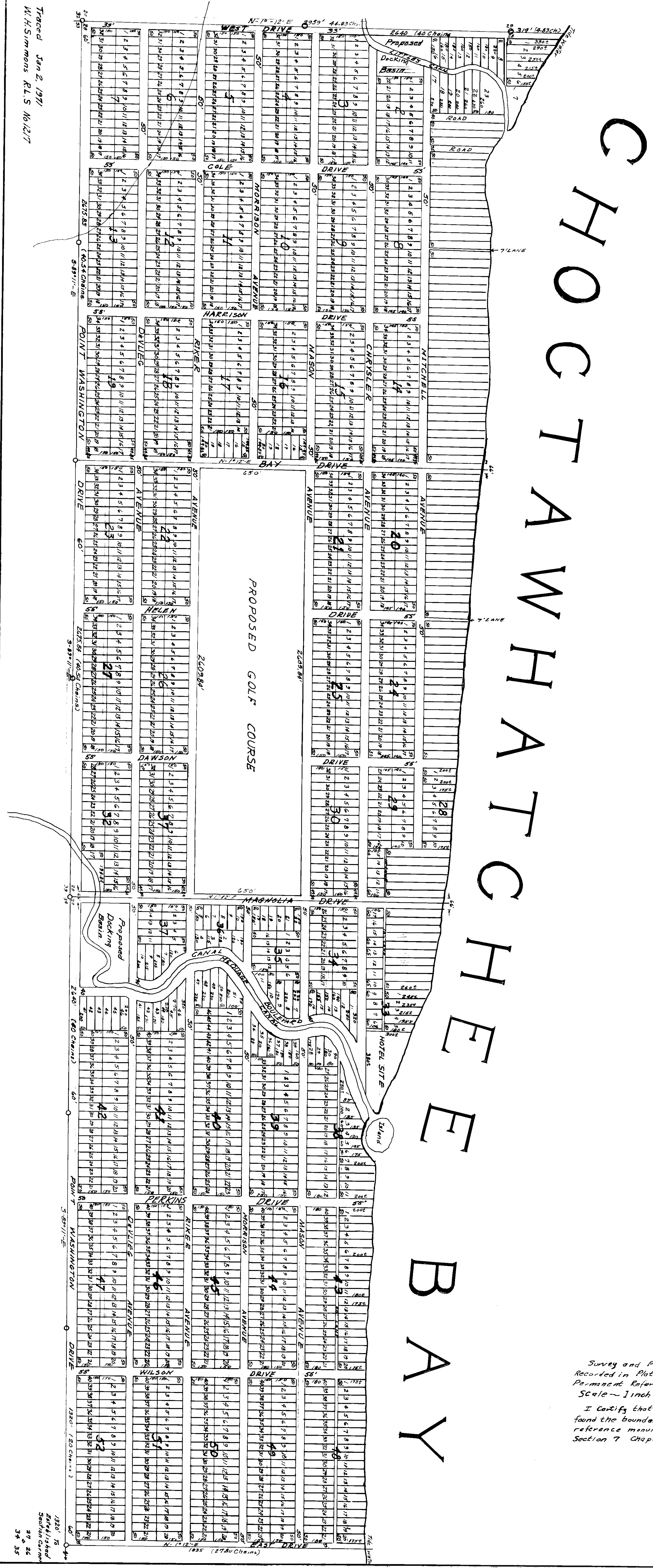


Traced Jan 2, 1926  
 W. H. Simmons R.L.S. No. 127



# MAGNOLIA BEACH

## WALTON COUNTY

### FLORIDA

Being a subdivision of the following described Property:  
 Lots 2 and 3 U.S. Survey Section 27, T.25. R.19W. (The same being all the unsubmerged portion of the W. 3/4 of said Section); also the S.E. 1/4 of Section 28, T.25. R.19W.; also S. 1/2 of the S.W. 1/4 of said Section 28; also lots 41, 42, 43, 44, 53, 54, 55, 56 and 57 of platced portion of Section 28. (The foregoing portions of section 28 being all the unsubmerged portion of said Section). Except that part of the W. 533 feet of Section 27, T.25. R.19W. lying 192 1/2 feet or more N. of S. Line of said Section; also except the E. 333 feet of Section 28, T.25. R.19W. lying 192 1/2 feet or more N. of S. Line of said Section 28; also except that portion of the W. 1840 feet of S.E. Quarter of said Section 28, lying 2145 feet or more N. of S. Line thereof; also except that portion of the S.W. Quarter of said Section 28 lying 2145 feet or more N. of the S. Line thereof, and 508 feet or more distant from the W. Line of said Section 28.

#### DEDICATION

THIS INDENTURE by Beachgrove Realty Company, a Corporation, WITNESSETH:  
 That said corporation has caused to be made the map or plat herewith of the lands indicated hereon and lying and being in WALTON COUNTY FLORIDA, to be known as Magnolia Beach, and does hereby dedicate to the perpetual use of the public the Streets or highways, parks, avenues, and alleys shown hereon, reserving to itself, its successors and assigns, owning lands adjoining or abutting same, the reversion or reversions thereof whenever discontinued by Law. In Witness whereof the said Corporation has caused these presents to be signed by its president this January 22 1926

Witness  
 [Signature] BEACHGROVE REALTY COMPANY  
 By: [Signature]

STATE OF FLORIDA  
 WALTON COUNTY

Before the subscriber personally appeared Ralph C. Wilson, known to me to be the President of Beachgrove Realty Company, a Corporation, and acknowledged that he executed the foregoing instrument for and on behalf of said Corporation with full authority. Witness my hand and official seal this January 22 1926

[Signature]  
 Notary Public, State of Florida  
 My Commission Expires 8/27/28

#### CERTIFICATE OF CLERK OF BOARD OF COUNTY COMMISSIONERS

I Certify that at a meeting of the Board of County Commissioners of Walton County, Florida, held on the 22 day of January A.D. 1926 the above plat was approved and accepted for record on the record books of this County.

[Signature]  
 Clerk of Board of County Commissioners  
 Walton County, Florida.

#### CERTIFICATE OF CLERK OF CIRCUIT COURT

I Certify that I have examined the above Plat and found it to conform in with all the requirements of Chapter 102.75 of the Laws of the State of Florida and the same has been filed for record in Plat Book 1 Page 1, Records of Walton County, Florida, on this the 22 day of January A.D. 1926.

[Signature]  
 Clerk of Circuit Court Walton County,

Survey and Plat made for Beachgrove Realty Company  
 Recorded in Plat Book 1 Page 1 Records of Walton County Florida.  
 Permanent Reference Monuments at Corners marked thus  $\odot$  control Survey.  
 SCALE - 1 inch = 300 Feet. Magnetic Declination: 3° 45' E

I Certify that I have surveyed the land above described on this found the boundaries to conform to the description in the title and reference monuments have been placed as shown and are in accordance Section 7 Chapter 102.75 Laws of the State of Florida.

[Signature]  
 Civil En.